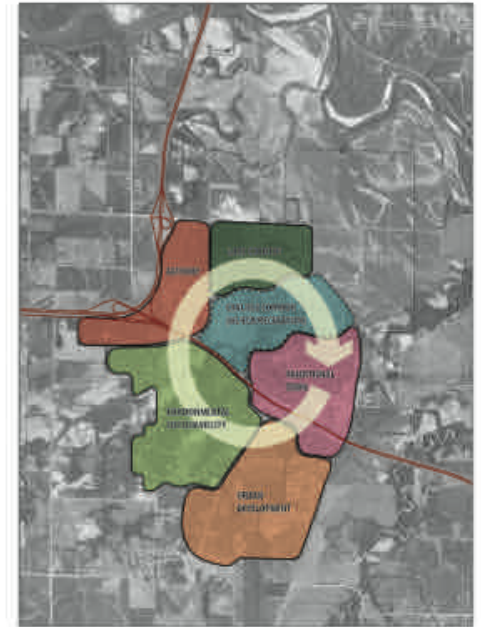
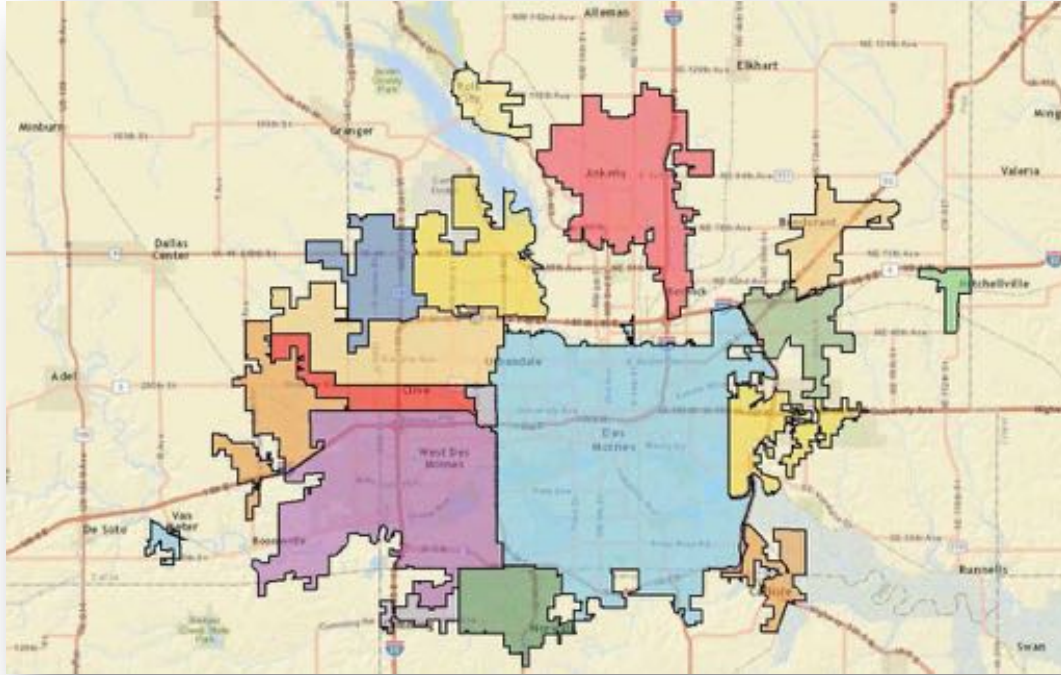


TARGET THE RIGHT PLACES AND POLICIES TO MAKE YOUR COMMUNITY  
MORE LIVABLE: AARP LIVABILITY INDEX

**RUTH RANDLEMAN, MAYOR**  
**CITY OF CARLISLE**



# CARLISLE TODAY



**DEVELOPMENT THEME**  
CARLISLE COMPREHENSIVE PLAN

Map 6.2: Rural Development Base

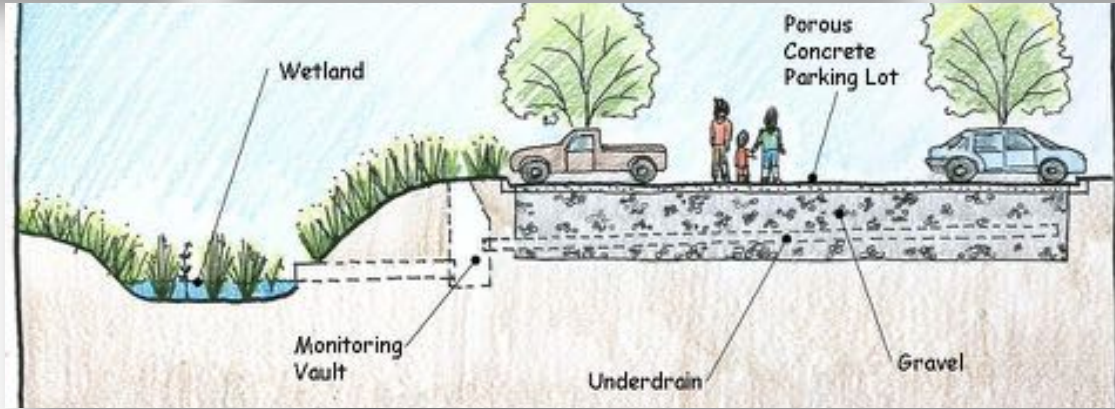




# VOLUNTEER CREEK WATERSHED PROJECT



# DEVELOP PERMEABLE PAVING CONSIDERATIONS FOR DEVELOPMENT



# EMBRACE NATURAL ASSETS AND BECOME A DESTINATION



Scotch Ridge Nature Park and Trail Committee

Created plan for area to showcase its natural ecosystems which uniquely exist in close proximity

Partner with Fleming Family

# SCOTCH RIDGE NATURE PARK MASTER PLAN



## SCOTCH RIDGE NATURE PARK MASTER PLAN

CARLISLE, IOWA

June 8, 2022



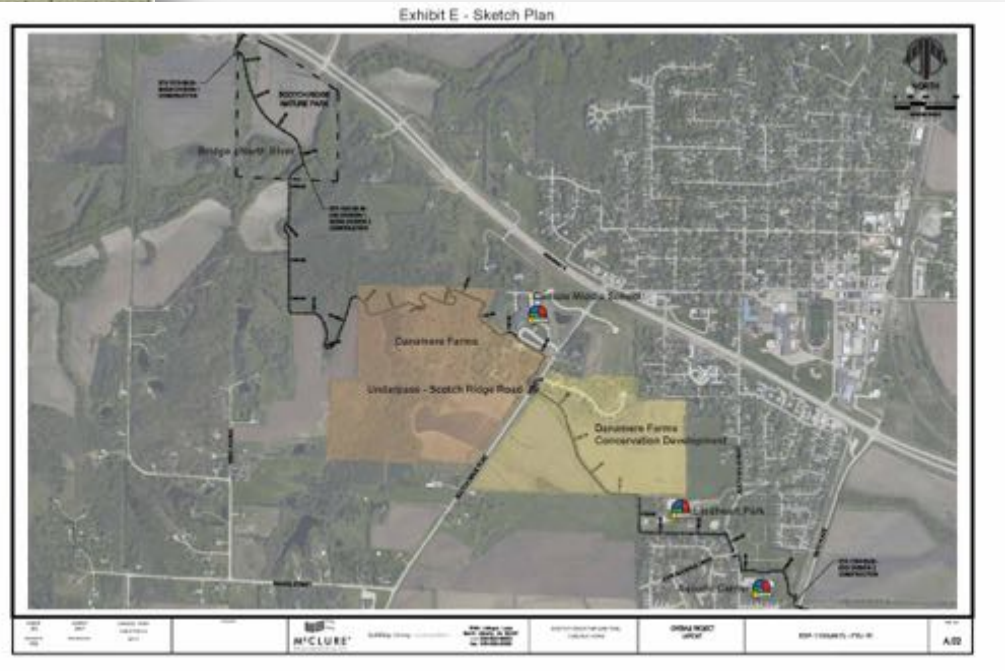
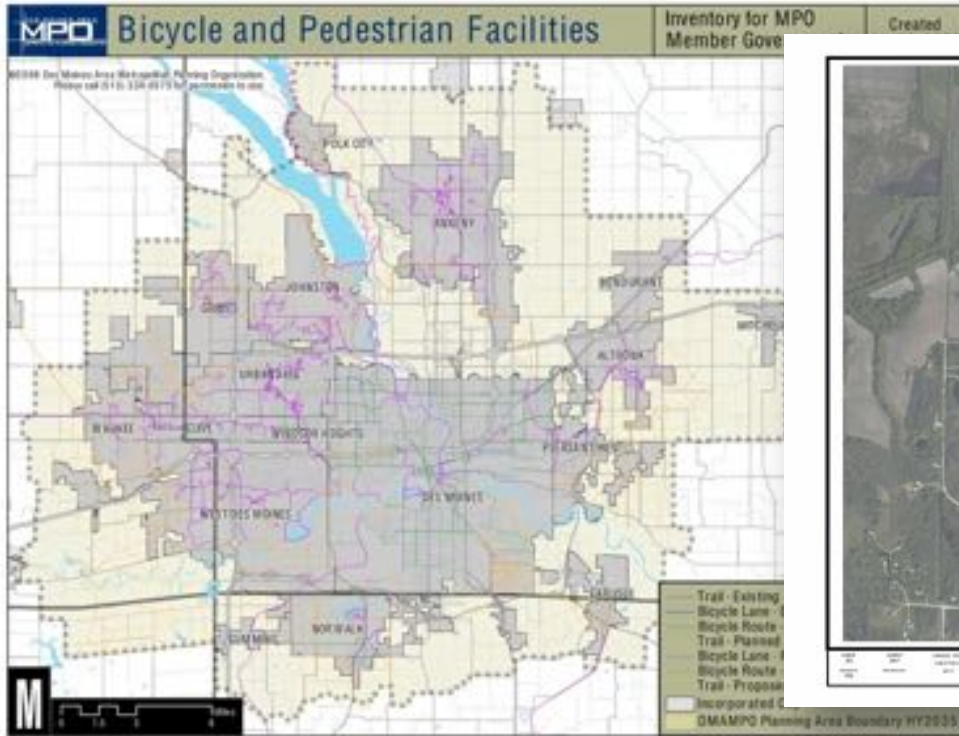
# FLEMING FAMILY PARTNERS

- **Oak Savannah Restoration**
- **Public Land Trust**
- **Organic Livestock**
- **Community Sustainable Agriculture Project**
- **Continued Prairie Restoration**
- **Offer of a City Tree Nursery**
- **Partner with Carlisle Schools/Middle School Conservation Garden**





# CARLISLE TRAIL EXTENSION



## Conservation Subdivision



## Danamere Village Townhomes



## Randleman Ridge



## Carlisle Assisted Living



# FUTURE PROJECTS



- **Walkability Technical Grant Implementation with Partners**
- **Hwy 5, School Street Intersection Improvements**
- **Sidewalk Program**
- **Speed and Signage**
- **Bike/Pedestrian Issues**

# FUTURE...VERY FUTURE: HIGHWAY 5 IMPROVEMENTS FOR SAFETY, CONNECTIVITY, WALKABILITY, AND TRAFFIC FLOW




# DOWNTOWN FACADE PROGRAM APPLICATION


**RDG...** DRAFT 1/10/2014

**Proposed Façade Rehabilitation**  
Carlisle, Iowa

January 2014  
RDG Project Number: 2013.554.00



Existing



Proposed

**NOTES: 48 SCHOOL STREET**

- Select masonry repair/replacement.
- Re-joint approximately 150 square feet of masonry.
- Provide new iron wood fins.
- Remove siding and provide recreated historic wood shank.
- Alternate: Provide new faced fabric awning.
- Alternate: Provide new signage.

•••

**RDG...** DRAFT 1/10/2014

**Proposed Façade Rehabilitation**  
Carlisle, Iowa

January 2014  
RDG Project Number: 2013.554.00



Existing



Proposed

**NOTES: 156 NORTH FIRST STREET**

- Repair approximately 200 square feet of brick masonry.
- Remove siding and provide recreated historic wood shank based on photographs and evidence on-site.
- Provide accessible ramp with railings.
- Alternate: Provide new signage.
- Alternate: Provide new faced fabric awning.

•••

# OUR VISION TOGETHER

Carlisle Community/School District  
Growing Green Communities  
Metro Waste Authority  
Hubbell Realty/Double D Development/Scotch Ridge LLC  
Fleming Family/Wallace House Foundation  
Iowa Natural Heritage Foundation  
Des Moines Area Metropolitan Planning Organization  
Warren County Conservation  
Polk County Conservation  
Vision Iowa/State of Iowa  
Great Places/State of Iowa  
REAP Fund/State of Iowa  
Recreational Trail Fund/State of Iowa  
Metropolitan Advisory Council  
Congressional Offices/Federal allocations  
Private Donors  
Carlisle Chamber of Commerce  
Warren County  
BRAVO  
RDG/Comp Plan/Nature Park Master Plan  
MidAmerican Energy  
Stuyvesant and Benton Law Firm  
Corporate Donors

Capital Crossroads /Regional Planning  
The Tomorrow Plan/Regional Sustainability  
DART/ DART Forward Plan  
Iowa River Revival  
AARP Iowa  
Iowa DOT  
Iowa State Legislators  
Watershed Improvement Review Board  
Smart Growth America/Walkability Institute  
Smart Growth America Local Leaders Advisory Council  
McClure Engineering/Fox Engineering/Barker LeMar Engineering  
Governor's Smart Planning Task Force  
Iowa DNR  
Iowa Finance Authority  
Community Development/USDA  
Iowa League of Cities  
Greater Des Moines Partnership  
Warren County Economic Development  
Iowa Architectural Foundation  
Metro Waste/WasteManagement  
Iowa Architectural Foundation  
Principal Financial Group  
Carlisle City Staff



# RESOURCES AND CHALLENGES

- ❑ **Our city paid 14.6% of total sustainable project costs**
- ❑ **With all partnerships, leveraged it into \$4,729,671**
- ❑ **Able to keep city tax levy rate stable**
- ❑ **Had to consider administration costs of grants and programs**









THANK YOU